

FLEX VRA

Beautifully designed. Built to perform.



2026 Catalog

About Flex VRA

Listening to clinicians from the start

Flex VRA was built to support how pediatric audiology is practiced today, not how it was practiced in the past.

From the beginning, our focus has been on helping audiologists maintain attention, reduce distraction, and adapt testing to the needs of each child.



Founded in 2017 by Steve Smith, Flex VRA began as a response to a simple question from the field: Is there a better way to control what appears on a VRA screen during testing?

That question led to a prototype that allowed clinicians to tailor content and environment in real time to improve engagement and test efficiency.

The positive response from audiologists shaped what Flex would become. Each request from clinicians became an opportunity to improve. Features like user-uploaded content, audiometer integration, and expanded testing modes were added in direct response to real-world use.

Today, Flex VRA supports hearing tests in over 1,000 clinics. That growth has been driven by close collaboration with audiologists and a commitment to listening, adapting, and improving.

Each feature added to Flex VRA reflects clinical feedback from audiologists working with pediatric patients every day. By focusing on usability, flexibility, and engagement, Flex VRA continues to evolve by listening to clinicians and families, one test at a time.



Why Flex VRA?

Faster Tests. Better Outcomes

Every Flex VRA system must be...

Engaging

Pediatric patients are discerning. Static lights and outdated visuals struggle to compete with the stimuli children experience every day. Flex VRA uses dynamic, modern visual reinforcement built to capture attention and maintain engagement throughout testing.

Fast and Reliable

Every second matters in pediatric testing. Flex VRA systems respond instantly and are ready whenever the child is ready to test, minimizing delays and missed opportunities.

Supported

Flex VRA support begins on installation day and continues throughout the life of the system. **You're not just purchasing hardware. You're partnering with a long-term support team.**

Simple and Integrated

Flex VRA integrates seamlessly with compatible audiometers and PC-based workflows. Every system ships with the required integration hardware, allowing clinicians to control reinforcement quickly without breaking focus during testing.



"We build solutions for the parents of the child being tested. If we provide tools for audiologists that help give those parents answers about their child's hearing, we'll always have a customer."

—Steve Smith, Founder



Flex VRA® is a registered trademark. Used in pediatric audiology clinics worldwide.

Combination/ Hybrid Systems

VRA For Any Age

Flex VRA combination systems allow clinicians to test a wider patient age range using a single remote control. For younger patients (6 month–1 year old), Flex Toy provides engaging visual reinforcement. For older patients, Flex Video monitors deliver age-appropriate content. Clinicians can easily switch between both on any patient, maximizing engagement and reducing test times.



Every Flex VRA Combo System Includes:

- 2 Remote Controls (Assistant and/or Backup Remote)
- Audiometer Integration Cable (GSI Audiostar Pro or Interacoustics EVO)
- Flex PC (Computerized Audiometer Users such as Madsen Astera)
- Built-in conditioned play audiometry games (SRT Board, Ball in Bucket Game, Ect.)
- 2 year warranty



Trusted by over 1000 pediatric audiology clinics worldwide

Combination/ Hybrid Systems



View Online

FLEX-RLC-FLEXTOY-RLC

Right, Left, and Center Flex VRA Video
Right, Left, and Center Flex Toy VRA

Add-on options:

FLEX-VROCA \$800

FLEX-SCREENMIRROR \$800



FLEX-RLC-FLEXTOY-RL

Right, Left, and Center Flex VRA Video
Right and Left Flex Toy VRA (Dual Toy)

Add-on options:

FLEX-VROCA \$800

FLEX-SCREENMIRROR \$800



FLEX-RL-FLEXTOY-RLC

Right and Left Flex VRA (Dual Video)
Right, Left, and Center Flex Toy VRA

Add-on options:

FLEX-VROCA \$800

FLEX-SCREENMIRROR \$800



FLEX-RL-FLEXTOY-C

Right and Left Flex VRA Video (Dual Video)
Center Flex Toy VRA

Add-on options: FLEX-VROCA \$800, FLEX-SCREENMIRROR \$800



FLEX-C-FLEXTOY-RL

Center Flex VRA Video
Right and Left Flex Toy VRA (Dual Toy)

Add-on options: FLEX-VROCA \$800, FLEX-SCREENMIRROR \$800



Faster tests. Better Outcomes.

Video VRA Systems



View Online

Designed beautifully. **Built to Perform.**

Flex VRA allows audiologists to choose the stimulus presented to the patient. Choose from engaging videos, simulated physical toys, flashing LED lights, or display custom content directly from the remote control.



Video content shown for demonstration purposes



Every Flex VRA Video System Includes:

- 2 Remote Controls (Assistant and/or Backup Remote)
- Audiometer Integration Cable (GSI Audiostar Pro or Interacoustics EVO)
- Flex PC (Computerized Audiometer Users such as Madsen Astera)
- Built-in conditioned play audiometry games (SRT Board, Ball in Bucket Game, Etc.)
- 2 year warranty



Video. Toy. Lights Only. Custom Content. **One System.**

Flex VRA Video Systems



View Online

Flex VRA Video Systems provide clinicians with a modern, flexible approach to visual reinforcement during pediatric testing. Each 13.5" monitor features an integrated 360-degree LED light bar and wireless control, allowing for precise, low-latency reinforcement throughout the test.

Clinicians can select reinforcement modes directly from the remote, including Video, Simulated Toy, Lights Only, and Custom Content. Custom content may be uploaded by the user or selected from built-in Hey Bear Sensory options, allowing the system to adapt to a wide range of patients and testing environments.

All Flex VRA Video Systems are designed to integrate seamlessly with compatible audiometers and include the required audiometer integration cable (GSI Audiostar Pro and Interacoustics EVO), Flex PC wireless computer control, and installation hardware.

FLEX-RLC (Most Popular)

Right, Left and Center Flex VRA Video

Add-on options:

FLEX-VROCA \$800

FLEX-SCREENMIRROR \$800



\$6,950

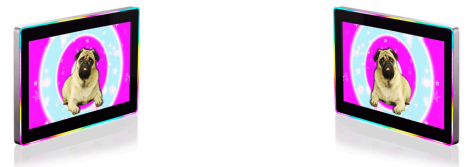
FLEX-RL

Dual monitor Flex VRA Video (no center display)

Add-on options:

FLEX-VROCA \$800

FLEX-SCREENMIRROR \$800



\$4,750

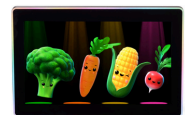
FLEX-C

Center Flex VRA Video (single display)

Add-on options:

FLEX-VROCA \$800

FLEX-SCREENMIRROR \$800



\$2,450



VRA Reimagined

Flex Mobile

VRA wherever you need it



View Online

A 13.5" Flex VRA monitor with an integrated LED light bar designed for portable use. Flex Mobile provides the full functionality of a standard Flex VRA system and ships with a fold-up tabletop stand and carrying case for portable use. These have been used for Cochlear Implant Mapping rooms, taken between sound booths in the same facility, and also travel well for mobile audiology.

Each Flex Mobile ships with two remote controls and Flex PC.

Power requirement: Standard AC power outlet required.



FLEX-MOBILE

Portable VRA System with Tabletop Stand – Includes 2 remote controls and Flex PC.

Add-on options:

FLEX-VROCA \$800

FLEX-SCREENMIRROR \$800



\$2,950



Simple design. **Flexible** operation.

Options and Accessories

Add-On to Flex VRA Video

There are two optional accessories available for Flex VRA Video Systems: Flex Screen Mirror and the Flex VROCA Button. These accessories are ordered with the system when desired and are not included as standard components.

Wireless Battery-Free VROCA Button

Allows the patient to actively participate in play audiometry using a wireless, battery-free VROCA (Visual Reinforcement Operant Conditioning Audiometry) button. Kinetic energy generated by the button press powers the wireless signal to the Flex VRA monitor, eliminating the need for batteries or cables.

The audiologist may also temporarily suppress button activation until the patient understands the instructions and is cooperative.



FLEX-BUTTON

\$800

Wireless Battery-Free Button

Includes:

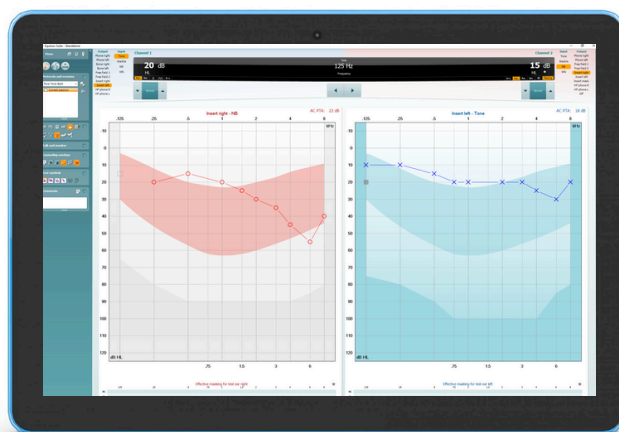
Yellow Button
Receiver USB Dongle for Flex VRA
Instruction Guide

Flex Screen Mirror

Turns one VRA monitor into an in-booth display using Flex Screen Mirror. This allows the audiologist to mirror any HDMI video source (Audiostar Pro, computer, or other input) directly to the VRA screen.

Screen Mirror is commonly used for testing inside the booth or for counseling parents by displaying audiograms and test results. Setup is simple using the included HDMI cable, and screen mirror mode can be toggled on or off directly from the touch screen.

Bonus: With compatible equipment, an otoscope feed can also be viewed inside the booth.



FLEX-SCREENMIRROR

\$800

Flex Screen Mirror Kit

Includes:

Flex Video Input
15 ft. HDMI Cable
Wireless Mouse and Keyboard



Works like magic.

Flex Toy VRA



View Online

Engagement through **variation**

Flex Toy is a next-level, traditional toy-based VRA designed to keep children engaged while making clinical workflows simple and flexible. It delivers reliable wireless activation without line-of-sight limitations, clear and localized audio reinforcement, and full software control without requiring any changes to your existing workflow. Thoughtfully engineered for daily clinical use, Flex Toy is built for long-term reliability you can trust.



Every Flex Toy VRA Includes:

- 2 Remote Controls (Assistant and/or Backup Remote)
- Audiometer Integration Cable (GSI Audiostar Pro or Interacoustics EVO)
- Flex PC (Computerized Audiometer Users such as Madsen Astera)
- 2 year warranty



Make it easy and fun.

Flex Toy

Simple VRA. **Thoughtfully updated.**



View Online

Flex Toy has been redesigned as a fully wireless, easy-to-install reinforcement option that emphasizes engagement through variation. An integrated LED panel displays a rotating set of light patterns with each activation, helping maintain patient interest throughout testing.

Every Flex Toy includes sound, distraction mode, and seamless integration with audiometers via Flex PC and integration cables. Each unit ships standard with our built-in character options (Dog, Cat, or Bus), with additional character upgrade kits available.

To see Flex Toy in action, visit flexvra.com/flextoy.

Character Upgrades \$150



FLEXTTOY-CARS



FLEXTTOY-TOYSTORY



FLEXTTOY-PRINCESS



FLEXTTOY-MICKEY

FLEXTTOY-RLC

Right, Left and Center Flex VRA Toy Boxes

Add-on options:

Custom Character Package \$150



\$2,950

FLEXTTOY-RL

Dual Flex Toy Box (no center box)

Add on options:

Custom Character Package \$150



\$2,250

FLEXTTOY-C

Center Flex VRA Video (single display)

Add-on options:

Custom Character Package \$150



\$1,250



Engagement through variation.

Flex Cover

Be heard. **Not Seen.**



Flex Cover reduces visual distractions through sound booth windows while preserving clear clinician visibility of the patient. This magnetic, remote-controlled window cover allows the audiologist to see into the booth while preventing the patient from seeing out, helping maintain focus during testing.

Flex Cover is battery powered and rechargeable, with flexible power options for periodic charging or continuous use. Installation is simple and non-invasive. The Flex Window Cover is sized for standard booth windows, while the Flex Door Cover is designed for the larger window panels commonly found in booth doors.



FLEX-WINDOWCOVER

\$800

Flex Cover for Viewing Window

Includes:

- 3 ft x 3ft Window Cover
- Magnetic Mounts
- Remote Control
- USB C Charger

FLEX-DOORCOVER

\$800

Flex Cover for Booth Door Window

Includes:

- 5 ft x 18 in Window Cover
- Magnetic Mounts
- Remote Control
- USB C Charger



Visually control the hearing test.

Flex Speaker

Designed for audiology



View Online

Flex Speaker is designed to deliver a clean, consistent speaker installation for audiometric testing. Integrated mounting magnets allow each speaker to be positioned on the booth wall prior to final securing, helping ensure consistent left and right speaker height and spacing.

An included measuring tape allows both speaker cones to be set at equal distance from the floor, while a small standoff gap between the wall and speaker provides clearance for cable routing when needed. Flex Speaker features pre-drilled mounting points for corner or flat-wall installation, eliminating the need for additional brackets.

Each speaker ships with speaker wire and a custom adapter cable compatible with GSI Audiostar Pro and Interacoustics EVO, converting standard outputs to terminal block connections for simplified installation.



FLEX-SPEAKER

Audiometric Speaker (pair)

Included:

Tape Measure

10 Meters Of Speaker Wire



\$650

FLEX-SPEAKER-ASP

Audiometric Speaker (pair)

Included:

Tape Measure

10 Meters Of Speaker Wire

GSI Audiostar Pro Audiometer Adapter Cable



\$650

FLEX-SPEAKER-EVO

Audiometric Speaker (pair)

Included:

Tape Measure

10 Meters Of Speaker Wire

Interacoustics EVO Audiometer Adapter Cable



\$650



Designed for audiology.